

HSELIFE



HEALTH, SAFETY AND
ENVIRONMENT NEWSLETTER
for the Oil and Gas industry

NEWSLETTER

Avoid unnecessary exposure to Covid-19 by using
HSElife NL remotely, also from your home.

HSELIFE NL

A brief overview of the **HSE digital solution** ^{*}
platform for the men and women on the shop
floor. What does it mean for you and your
organization in a current situation?

Find out in 5 STEPS!

1
WHAT IS
HSELIFE
NL?

2
VIRTUAL
TRAINING
MODULES

3
HSE
INFORMATION

4
REGISTER
AND
CONTROL

5
STAYING
SHARP
AND
ALERT!





INTRODUCTION



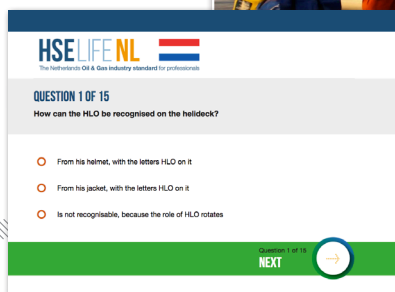
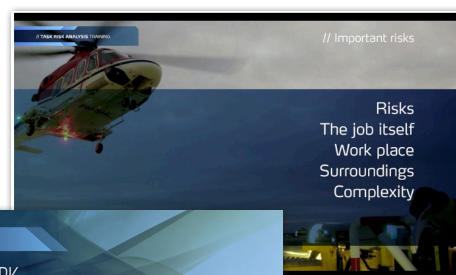
HSElife NL is an online HSE digital platform that provides a TOTAL PACKAGE for a SAFE and HEALTHY workplace. It is intended for the men/women on the shop floor but the benefits of using it are visible throughout the whole organization: **EASY-TO-USE, COST EFFICIENT** and above all it provides an **EFFECTIVE SOLUTION!** Let us introduce you to a world without work related incidents... **the world of HSELIFE NL!**



REMOTE TRAINING

It is now, more than ever, extremely important to minimize the risk of unnecessary Covid-19 exposure for your employees. Having that in mind, HSElife NL provides the perfect solution with 30 + VIRTUAL TRAINING MODULES, such as Interactive Induction OFFSHORE, ONSHORE, Permit-to-Work, Mercury, Chromium-VI, Natural Gas Condensate and many more!

On any device, anytime, anywhere:
for the right training at your fingertip!





FOR ANY OCCASSION

Short and concise HSE information for daily use in a **digital format** (self-printable). **Onscreen presentations**, suitable for Toolbox meetings, with 5 questions and answers. A **short video**, to use during meetings or remotely, for work preparation. Interactive **questionnaires** with multiple choice answers and the results are registered in our Registration System.



YOUR COMPETENCE

The **HSElife LEARNING AND REGISTRATION SYSTEM**, LARS for friends, is the latest edition of the online training and certification registration system. It can be used on any device (desktop and mobile) to automatically register your training certificate and to control your competence by authorized personnel.

KEY FEATURES

- 24/7 overview of training results
- New training modules addition
- Industry-wide overview
- Personal info management
- Secure SSL information
- Scan QR code for secure verification
- link to your own CMS (via API) and vice versa





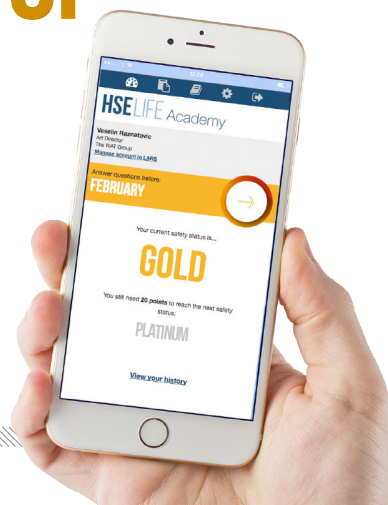
HSELIFE Academy



optional module 1 (on request)

ALWAYS AT THE TOP

What you've learned in the last few weeks disappears just as easily... if not maintained. **HSELIFE ACADEMY** is a scientifically proven training support tool that maintains your level of training knowledge where it should be - **at the highest possible level.**



HSELIFE ACADEMY CAN BE USED ON ANY DEVICE > SMARTPHONE, TABLET, COMPUTER,...

optional module 2 (on request)

HSELIFE Messenger 2.0
inform > motivate > activate > improve

CONNECTED AND ALERT



Another additional tool of HSELife NL is **HSELIFE MESSENGER 2.0**. It's an interactive TWO WAY COMMUNICATION SYSTEM that allows the Organization to keep their employees ALERT, MOTIVATE them to participate, ACTIVATE them to think and to contribute towards achieving the goals of the Organization and also to IMPROVE their work processes, safety and company culture, ... **ON-DEMAND!**



HOW TO PARTICIPATE?

Anyone who works or will work in the Netherlands for one of the NOGEPa members (the Oil and Gas Companies) can get free access to **hselifenl.com**.

For more information on how to participate, read the **HSELife Newsletter #9 here >**



MORE INFORMATION? Just send your question to **info@thewatgroup.com**